

MARQUE

## Philosophy

# HANDING OVER THE KEYS

To dream homes



At Marque, our philosophy is simple – you should have a say in the development of your dream home.

That's why we put you in the driver's seat throughout the process of building your custom luxury home. From the planning stages right through to the unique finishing touches, your choices lead the way. And the result is a home that's personal and meaningful to you and your family.

Build a superior home and a lasting relationship with Marque. Even after your dream is completed, we're available to provide you advice on the up keep of your property where required.





## Company

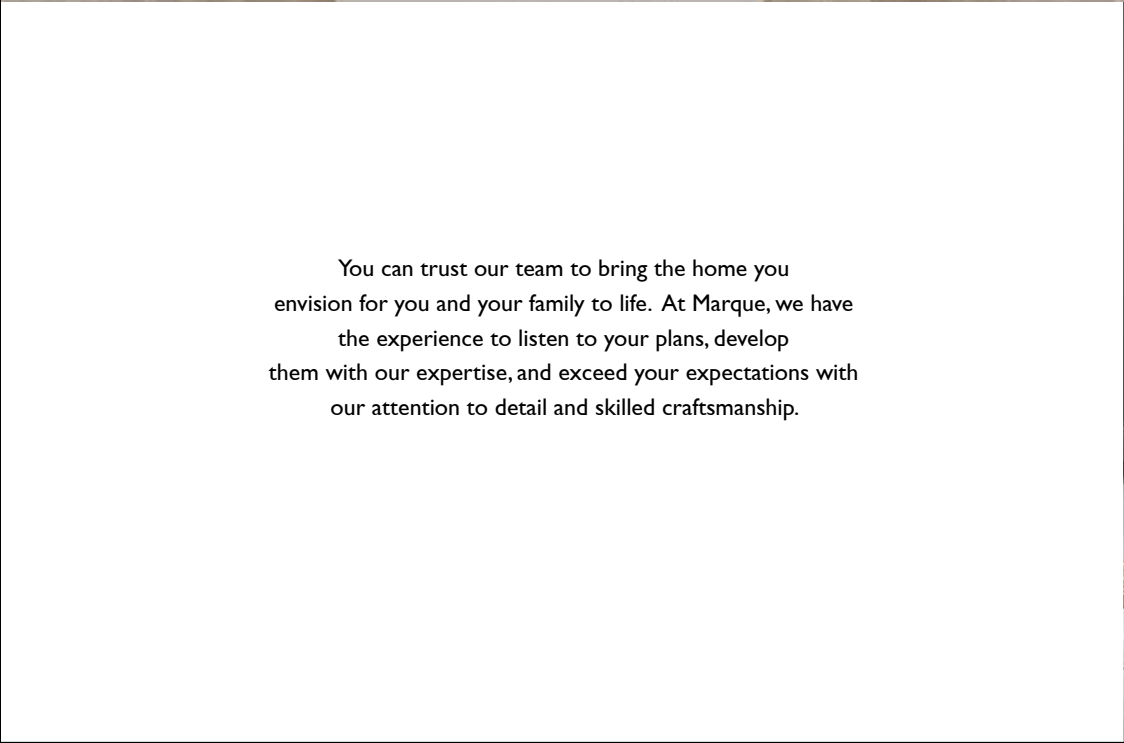
# UNIQUE LUXURY HOMES

For your unique life style

At Marque, you can expect a personal relationship that will last years after your unique luxury home is built. You can also trust our team to tend to your needs from start to finish so that the final result is what you've always dreamed of.



When you're building a luxury home or a bespoke investment property, you want superior quality and outstanding, sophisticated design.



You can trust our team to bring the home you envision for you and your family to life. At Marque, we have the experience to listen to your plans, develop them with our expertise, and exceed your expectations with our attention to detail and skilled craftsmanship.

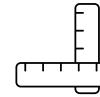


## Process

# A TAILORED PROCESS

For personalised luxury home

At Marque, we build on your dreams. Our process is as personal and flexible as possible so that we can craft a bespoke solution just for you.



### DESIGN PHASE

We start with our existing plans, moulding them and making adjustments until you're satisfied. During this process we listen to what it is you love, providing our expertise and recommendations along the way. The details of a house are what make it a home – which is why we take the time to help you create exactly what you want.



### DOCUMENT PHASE

Here's where we organise and complete all of the documentation that's necessary to begin your build, including working drawings, permits, energy ratings and more. We'll ensure everything is in place, so you don't have to worry about a thing.



### CONSTRUCTION

Once planning is complete, the construction of your luxury home begins. We'll continue our superior communication in this phase – at specific milestones we will invite you to check your build progress, keeping you involved at all times.



### HAND OVER

This is the most exciting part of any project for us – showing you around your new home or investment property. Including a demonstration of how to use all appliances, this tour of your completed property means you're ready to move in!



### ONGOING RELATIONSHIP

When you build your dream home, you intend to settle there as long as you can. That's why we're committed to an ongoing relationship with you. Rely on us for any advice or assistance, even years after its completion. Contact us today to talk about how we can help you build your dream home from planning to post construction maintenance.





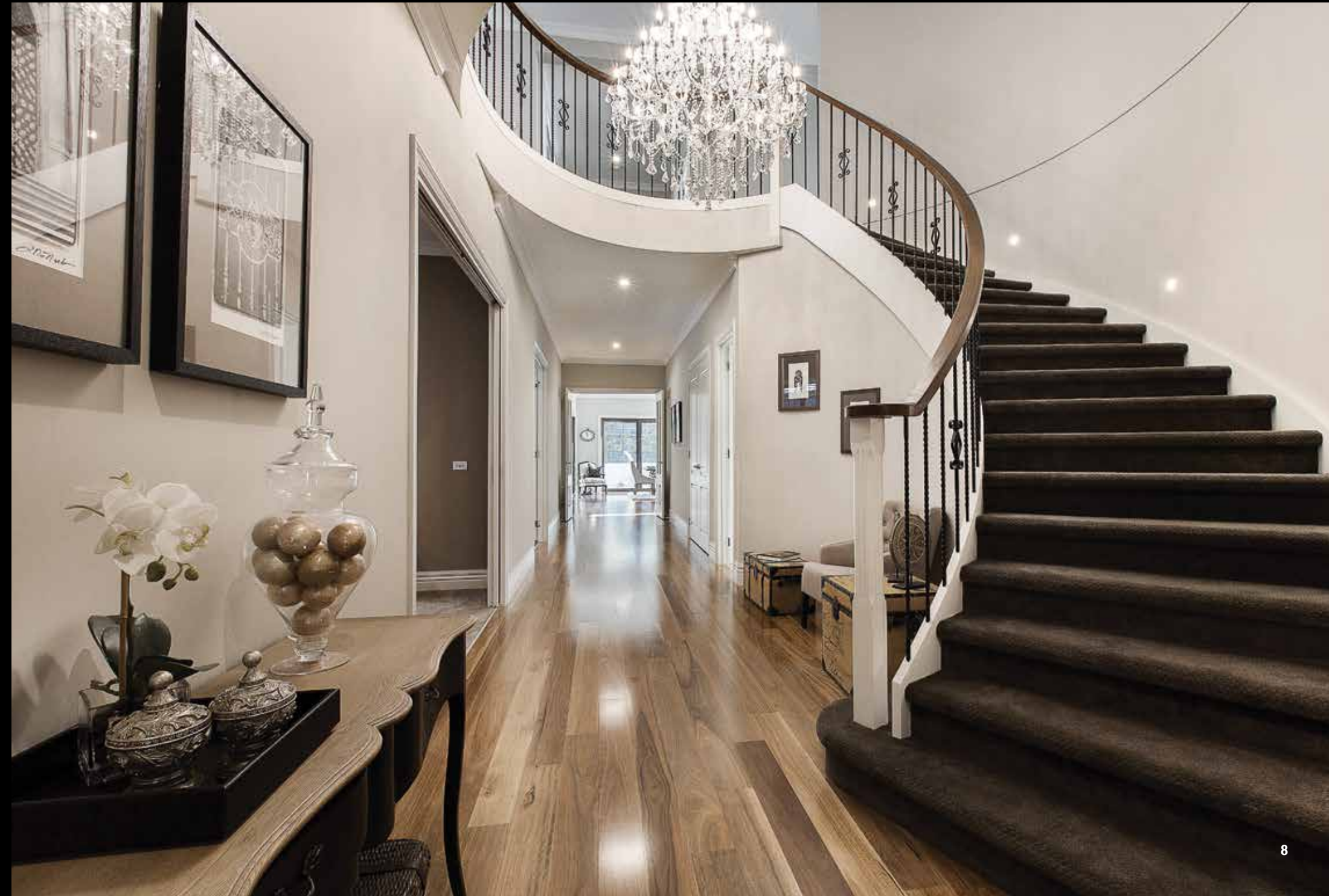


## Custom Homes

### UNIQUE LUXURY HOMES

Built to suit individual needs

Our custom and luxury homes bring together creativity, functionality and unique style to suit our clients needs. We bring to life our client's ideas and vision, whether you have a blank canvas or an existing concept. All Marque properties are intricately designed and detailed by our architect. Our meticulous design and build process clearly defines what our clients want and need. We capture each clients personal style, understand their surroundings and define how they want to live.







## Modern Range

---

### OFF THE PLAN DESIGNS

Choose one of our exclusive plans as a starting point to create your ideal home. You'll have the option to customise our sophisticated designs, or commence with them just as they are.





### ASPECT

A symmetrical facade balanced with soft tones, minimalistic lines and floor to ceiling glass give this modish design refined sophistication.



### KARTEL

A strikingly vogue design, this residence balances modern living with refined urban architecture. A dark, rich, recessed garage and entry, fused with clean, earthy, granite-like facade give this concept a sophisticated street presence.



### HERON

Precast industrial panels, uniform shape and recessed natural facade make this design definitively bold. A careful balance of open plan with delicate separation provides privacy without disturbing the creation of light and space.



### LAUFEN

Strong uniform lines with exquisite, sensitive earthy tones make this contemporary residence astutely inspiring. Plentiful light and a fusion of stone and timber provide natural energy and transparency to this design.





Irving 42

3 2 2 2

Dwelling Size  
42.44 sq

Ground Floor	33.47 sq
Garage	4.76 sq
Porch	2.10 sq
Alfresco	2.11 sq



Elgar 39

3 2 3 2

Dwelling Size  
38.55 sq

Ground Floor	30.17 sq
Garage	4.39 sq
Porch	1.18 sq
Alfresco	2.81 sq







### AXIS

An uninterrupted facade balanced with successive, vertical timber lines give this modish design strength and refinement.



### LINEAR

A distinctly contemporary design, this residence balances modern living with modest style. Dark rich timber garage and entry doors fused with a clean, earthy, granite-like facade give this concept and aura of class.



### BASALT

Minimalistic lines, uniform shapes and a deliberate continuous facade make this design intricately contemporary, yet composed in nature.



### VISTA

Uniformity, subtle tones and evenly balanced shape make this contemporary residence astutely inspiring. Plentiful light and space from large panel glazing provide energy and transparency.



Fairly 60

4 3 3 2

Dwelling Size

60.34 sq

Ground Floor	25.42 sq
Garage	4.67 sq
Porch	3.03 sq
Alfresco	2.94 sq
First floor	24.28 sq



Ground Floor



First Floor

Howitt 51

4 3 4 2

Dwelling Size

51.40 sq

Ground Floor	23.21 sq
Garage	3.98 sq
Porch	0.92 sq
Alfresco	2.25 sq
First floor	21.04 sq



Ground Floor



First Floor



## Modern Range - METROPOLITAN

---

Experience modern design features and luxury inclusions with our Metropolitan range. Choose from our unique range of floorplans, or personalise to create your very own dream home in the heart of Melbourne.



### MODENA

This clean and balanced facade projects simplicity and elegance with understated tones.



### AMALFI

This astute facade is accentuated by its stone feature pillar, offering a striking street presence.





### FERRARA

An open and inviting facade which provides an abundance of natural light to both living levels.



### BARI

A clever yet imposing facade, the Bari dominates the street scape with its striking features.



### BOLOGNA

The Bologna provides a contemporary facade accentuated by its traditional brickwork and subtle use of render.



### ENNA

This facade is characterised by the straight clean lines of its timber form feature adding drama to the streetscape.





Auburn 41

4 3 2 2

Dwelling Size  
41.62 sq

Ground Floor	17.80 sq
Garage	4.10 sq
Porch	1.06 sq
Alfresco	2.37 sq
First floor	15.59 sq
Balcony	0.70 sq



Ground Floor



First Floor

Auburn 46

4 5 4 2

Dwelling Size  
46.7sq

Ground Floor	17.80 sq
Garage	4.10 sq
Porch	1.06 sq
Alfresco	2.37 sq
First floor	20.67 sq
Balcony	0.70 sq



Ground Floor



First Floor

Cotham 38

4 3 2 2

Dwelling Size  
38.28 sq

Ground Floor	19.04 sq
Garage	3.93 sq
Porch	1.17 sq
First floor	13.44 sq
Balcony	0.70 sq



Ground Floor



First Floor





Cotham 43

5 3 3 2

Dwelling Size  
43.72 sq

Ground Floor	19.04 sq
Garage	3.93 sq
Porch	1.16 sq
First floor	18.90 sq
Balcony	0.69 sq



Ground Floor



First Floor



## Classic Range

---

Discover the opulence and elegance of our aspirational Classic range. Elegantly inspired period designs with luxurious finishes that truly make a statement. Have the option to proceed with our floorplans as is, or personalise to suit your very own discerning tastes.





### CHATTEL

A banded facade and recessed garage doors all contribute to the grandeur of this homes innovative and elegant facade.



### MAISON

This elegantly inspired period design incorporates dramatic roof and facade detail typical of British stately manors.



### LODGE

This clever design projects a slightly more modern tone with clean front windows, symmetrical chimneys and subtle contemporary features.



### PALAIS

This modestly grand single storey residence is a true example of contemporary European design with French influences. Raised entrance, period roof tiling and banded framing distill the grandeur of this home.



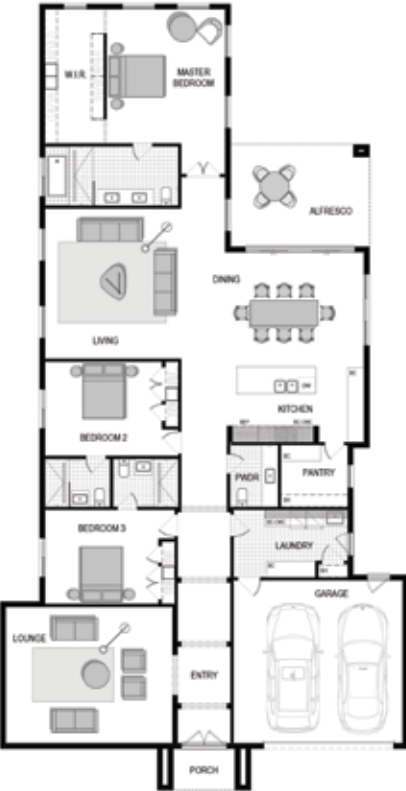


**Bourke 36**

3 2 3 2

Dwelling Size  
35.68 sq

Ground Floor	28.47 sq
Garage	4.52 sq
Porch	0.58 sq
Alfresco	2.11 sq

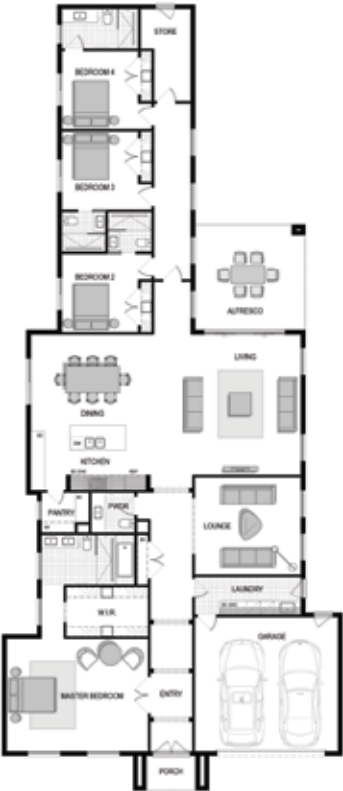


**Grange 39**

4 2 4 2

Dwelling Size  
39.38 sq

Ground Floor	31.82 sq
Garage	4.52 sq
Porch	0.56 sq
Alfresco	2.48 sq







### CHATEAU

A passionate European inspired design that engages the streetscape with horizontal bands, detailed mouldings and decorative wrought iron, typical of provincial design.



### MONARCH

Clean lines with simplistic, yet elegant detailing gives this residence a perfect balance of minimalism and enduring sophistication. Large single panel glazing provides energy, light and contemporary take on a timeless, period-influenced facade.



### ESTATE

This regal home is characterised by well-defined rectangular forms, horizontal bands and symmetry. Straight clean lines lead you toward the front facade where the imposing pillared portico and tall, double hardwood doors are prominent.



### MANOR

Inspired by grand British Georgian Estates, this concept embodies a timeless elegance that is unmistakably distinguished.



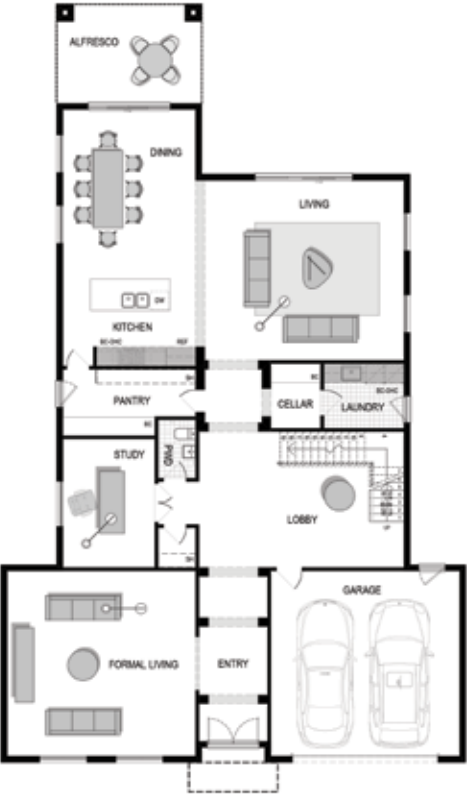


**Belmore 54**

4 3 4 2

Dwelling Size  
**53.17 sq**

Ground Floor	22.58 sq
Garage	4.24 sq
Alfresco	1.61 sq
First Floor	24.45 sq
Balcony	0.29 sq



Ground Floor



First Floor



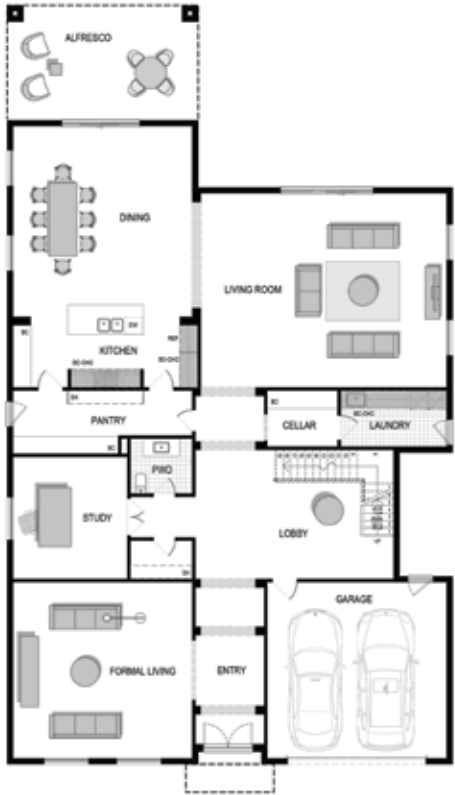
Belmore 62

4 3 4 2

Dwelling Size

61.40 sq

Ground Floor	28.31 sq
Garage	4.24 sq
Porch	0.65 sq
Alfresco	2.72 sq
First Floor	25.49 sq



Ground Floor



First Floor

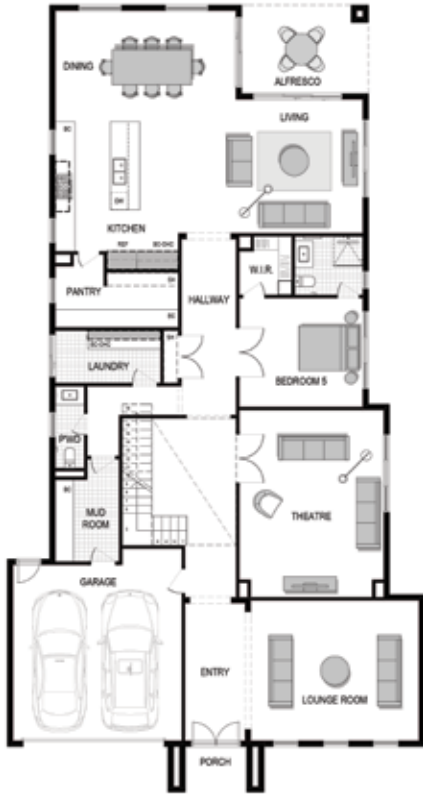
Rose 62

5 4 5 2

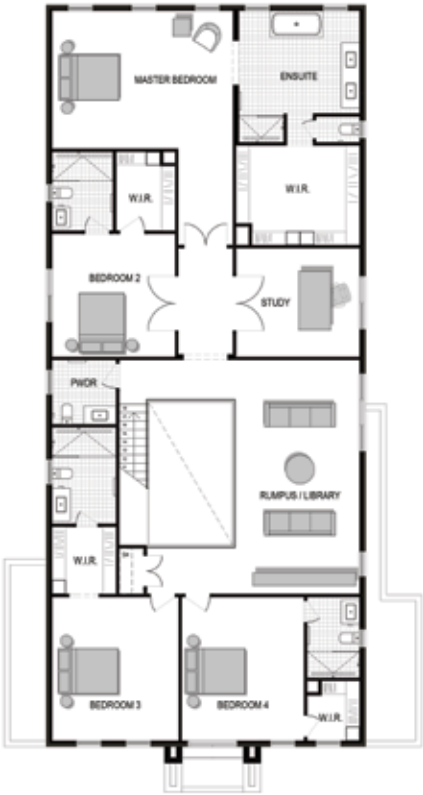
Dwelling Size

62.08 sq

Ground Floor	26.49 sq
Garage	4.11 sq
Porch	0.55 sq
Alfresco	1.40 sq
First Floor	29.53 sq



Ground Floor



First Floor

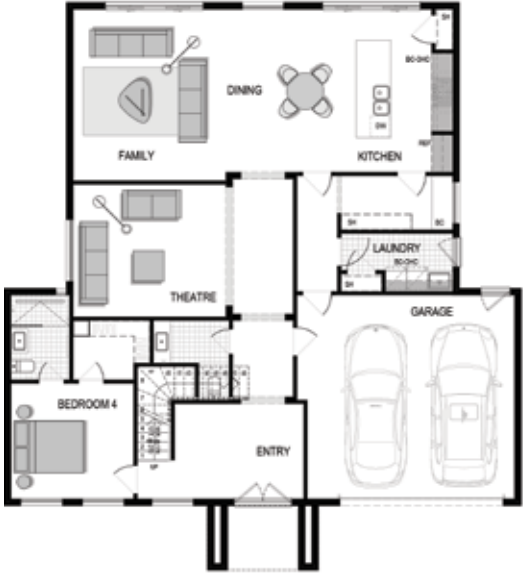


Hopetoun 40

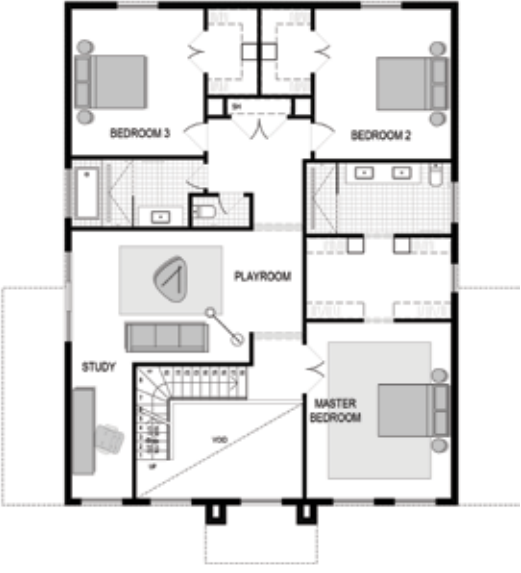
4 3 3 2

Dwelling Size  
39.85 sq

Ground Floor	16.40 sq
Garage	4.44 sq
Porch	0.67 sq
First Floor	18.34 sq



Ground Floor



First Floor

Floor plans, facade images and photographs of this publication have been used for illustrative purposes only, and may not represent the final product. Information shown in this brochure is owned by Marque Property Group. No information or images from this brochure may be reproduced without prior written consent. Whilst every effort is made to ensure accurate information, this does not warrant that this brochure is free of errors or omissions. Marque does not accept responsibility for any loss, damage or cost associated as a result.



Craft and finish

## SUPERIOR HOMES

Finished with the most trusted,  
quality brands



Attention to the finishing details is what sets a luxury home  
apart from the pack.



That's why at Marque, we're proud to offer you only the very best appliances and fittings.





## BELMORE - Display home

**Address:** 37 Belmore Road, Balwyn North

**Phone:** 1300 062 778

**Opening hours:** Wednesday to Sunday, 12pm - 5pm or by appointment



## ROSE - Display home

**Address:** 3 Rose Ave, Glen Waverley

**Phone:** 1300 062 778

**Opening hours:** Monday to Sunday, 12pm - 5pm or by appointment



# MARQUE

Marque Property Group Pty Ltd

**Address:** 1104 - 1108 Toorak Road, Camberwell VIC 3124

**Phone:** 1300 062 778

**Email:** [info@marque.com.au](mailto:info@marque.com.au)