

# Huntingdale

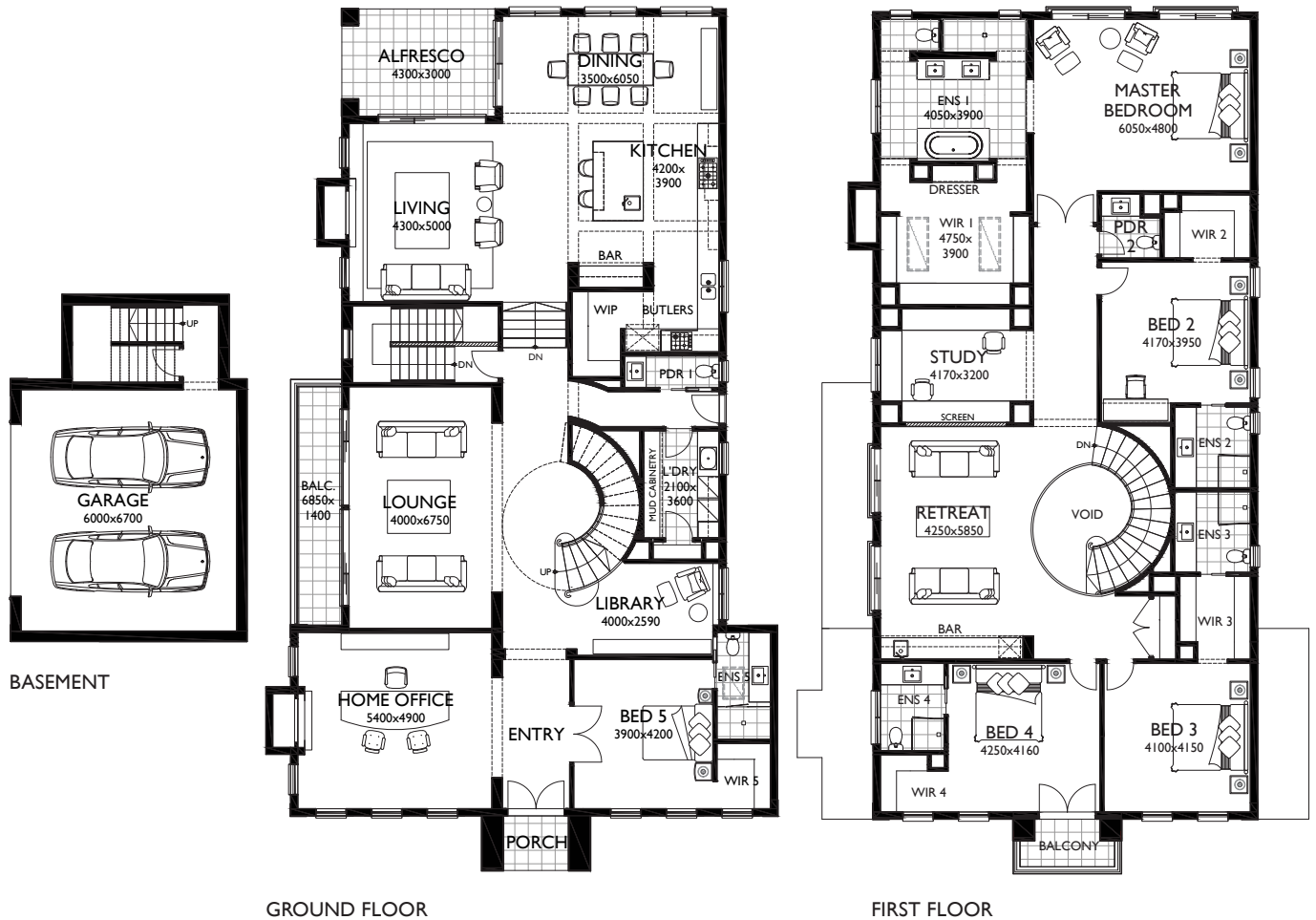
145 Huntingdale Road, Ashwood



MARQUE | Luxury

# Huntingdale 62 as displayed

 5
  5
  3
  2
  2



## MEASUREMENTS

Ground Floor	245.47m <sup>2</sup>	26.42sq
First Floor	241.78m <sup>2</sup>	26.03sq
Total Living	545.76m <sup>2</sup>	58.75sq
Porch	4.58m <sup>2</sup>	0.49sq
Garage	58.51m <sup>2</sup>	6.30sq
Balcony Ground Floor	9.75m <sup>2</sup>	1.05sq
Balcony First Floor	4.58m <sup>2</sup>	0.49sq
Alfresco	12.77m <sup>2</sup>	1.37sq
<b>Total Area</b>	<b>577.44m<sup>2</sup></b>	<b>62.16sq</b>

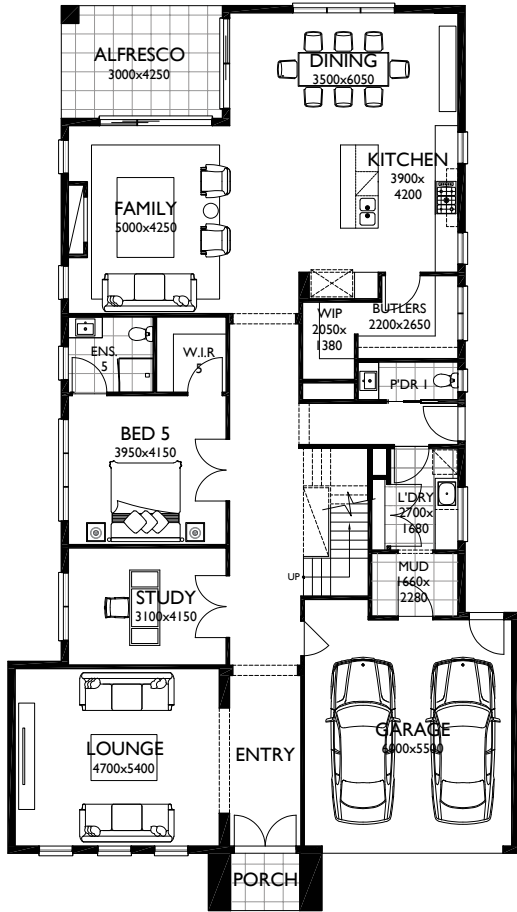
As displayed facade: Monarch  
 Speak to our team about available facade options.



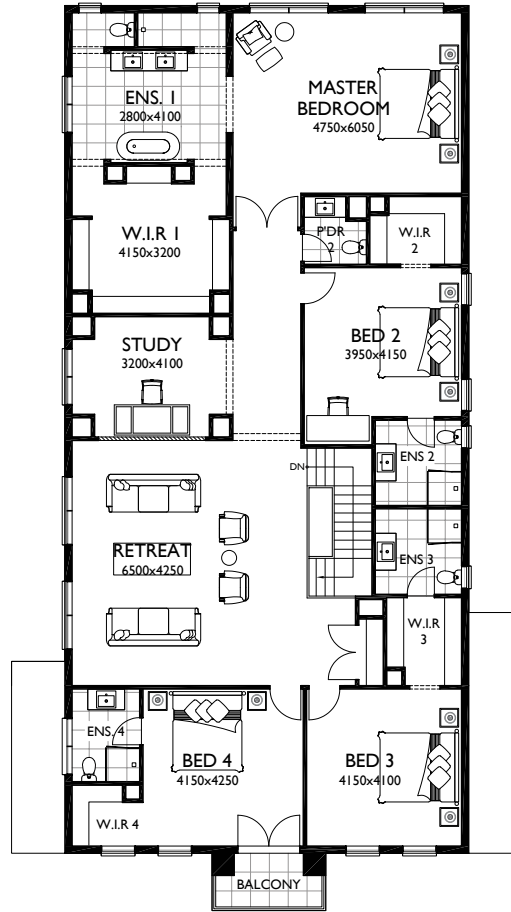


# Huntingdale 54

 5
  5
  3
  2
  2



GROUND FLOOR



FIRST FLOOR

## MEASUREMENTS

Ground Floor	208.46m <sup>2</sup>	22.44sq
First Floor	240.43m <sup>2</sup>	25.88sq
Total Living	448.89m <sup>2</sup>	48.32sq
Porch	4.58m <sup>2</sup>	0.49sq
Garage	36.40m <sup>2</sup>	3.92sq
Balcony	4.58m <sup>2</sup>	0.49sq
Alfresco	12.77m <sup>2</sup>	1.37sq
<b>Total Area</b>	<b>507.22m<sup>2</sup></b>	<b>54.60sq</b>





MARQUE | Luxury





## Huntingdale

A stunning haven that exudes an air of elegance and refinement, welcome to Huntingdale designed by Marque. This luxury abode caters to every facet of your lifestyle with its multiple living zones, providing ample space for you to entertain and unwind. The two separate studies, one on each level, offer a peaceful haven to work or study from home. The primary suite boasts a lavish bath and a large dressing room, while each of the five bedrooms is designed with your comfort in mind. The chef's kitchen, complete with a butlers pantry and walk-in pantry, is an entertainer's delight. Enjoy seamless indoor-outdoor living with the open plan design that flows effortlessly onto the alfresco area. Embody all you need and more at Huntingdale.

MARQUE | Luxury



# MARQUE | Luxury

Marque Property Group Pty Ltd  
1104-1108 Toorak Rd, Camberwell VIC 3124  
1300 062 778 [marque.com.au](http://marque.com.au)

All imagery is for illustrative purposes only. Facades are subject to change depending on developers, Council and other authority requirements. Floorplan variations may occur depending on facade selected. Always refer to contract documentation and working drawings for details. Working drawings take precedence over brochure. Marque reserves the right to amend specification and price without notice. All designs are property of Marque and must not be used, reproduced, copied or varied, wholly or in part without written permission from an authorised Marque representative. Marque Property Group. Builder's Licence CDB U 50037. V3 11.11.24.