

Capel

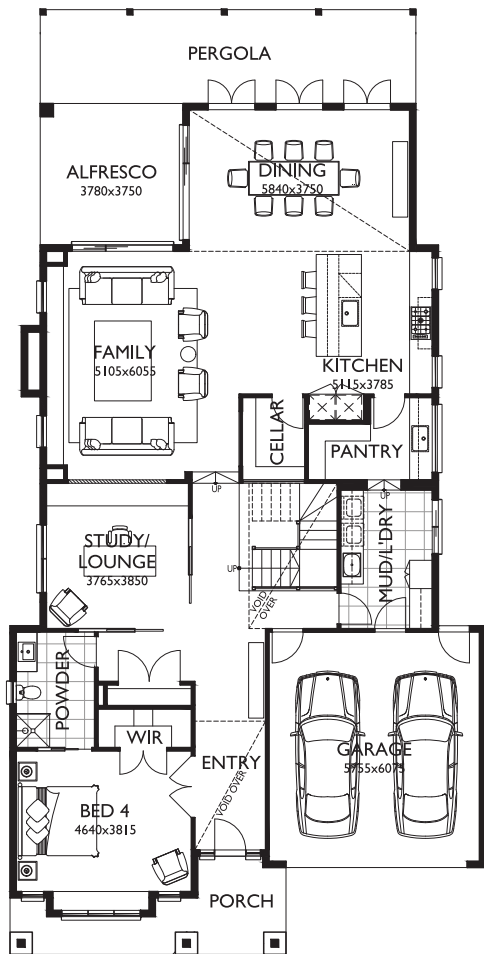
Kinley Estate, 10 Gallagher Crescent, Lilydale



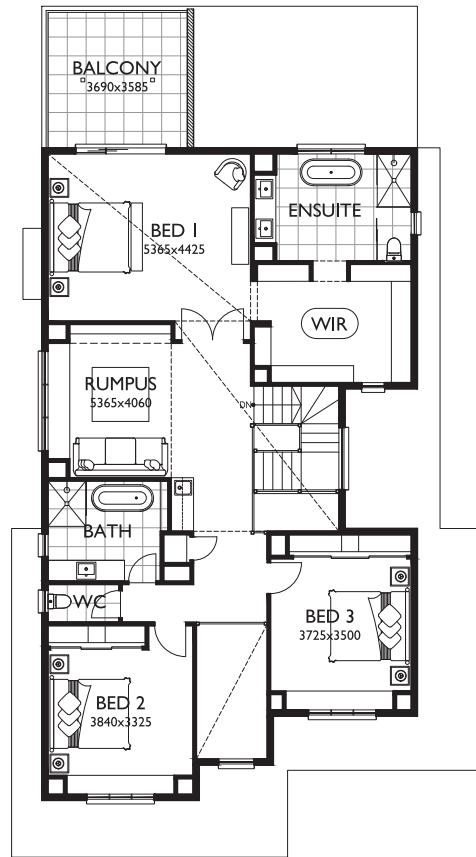
MARQUE | Black Collection

Capel 42 as displayed

 4
  3
  2
  1
  2



GROUND FLOOR



FIRST FLOOR

Experience the epitome of grandeur with the Capel 42 floorplan, a stunning double-storey home that boasts a spacious primary suite with a luxurious ensuite and grand dressing room, and three generously sized additional bedrooms. The open-plan kitchen and dining area extend to an alfresco, ideal for entertaining large crowds. The three living areas provide ample space for relaxation, while the walk-in pantry and three bathrooms offer convenience and comfort. This magnificent home is perfect for those seeking style, comfort, and functionality.

Suits lot width: 14m, lot depth: 30m

MEASUREMENTS

Ground Floor	179.10m ²	19.28sq
First Floor	149.91m ²	16.14sq
Total Living	329.01m ²	35.42sq
Garage	37.03m ²	3.99sq
Porch	11.91m ²	1.28sq
Alfresco	14.17m ²	1.53sq
Balcony	15.13m ²	1.63sq
Total Area	407.25m²	43.84sq

As displayed facade: Hamptons
 Speak to our team about available facade options.



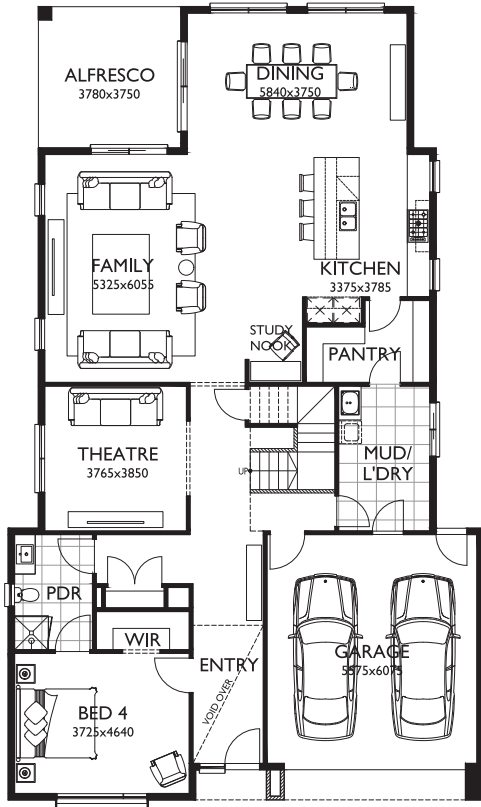




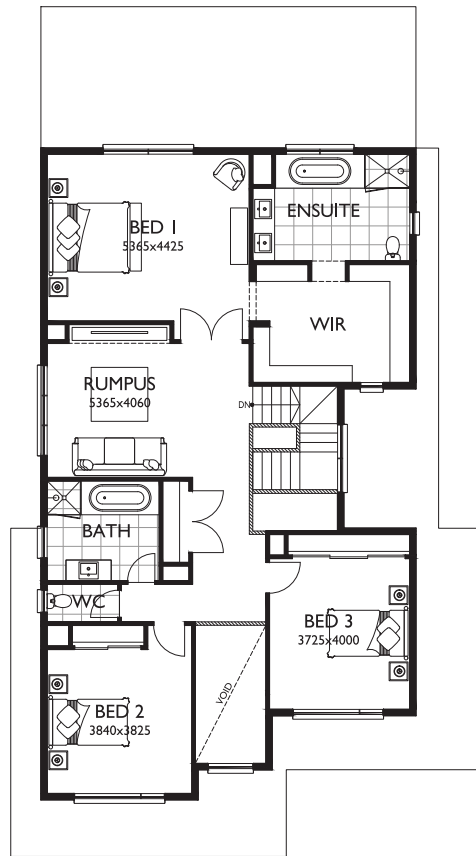
MARQUE | Black Collection

Capel 42

 4
  3
  3
  1
  2



GROUND FLOOR



FIRST FLOOR

Floorplan based on the contemporary facade.

MEASUREMENTS

Ground Floor	179.18m ²	19.29sq
First Floor	155.69m ²	16.76sq
Total Living	334.87m ²	36.05sq
Garage	36.02m ²	3.87sq
Porch	6.89m ²	0.74sq
Alfresco	14.17m ²	1.53sq
Total Area	391.95m²	42.19sq





MARQUE | Black Collection

Marque Property Group Pty Ltd
1104-1108 Toorak Rd, Camberwell VIC 3124
1300 062 778 marque.com.au

All imagery is for illustrative purposes only. Facades are subject to change depending on developers, Council and other authority requirements. Floorplan variations may occur depending on facade selected. Always refer to contract documentation and working drawings for details. Working drawings take precedence over brochure. Marque reserves the right to amend specification and price without notice. All designs are property of Marque and must not be used, reproduced, copied or varied, wholly or in part without written permission from an authorised Marque representative. Marque Property Group. Builder's Licence CDB U 50037.V3 29.01.25