

# Buckley

278 Buckley Street, Essendon

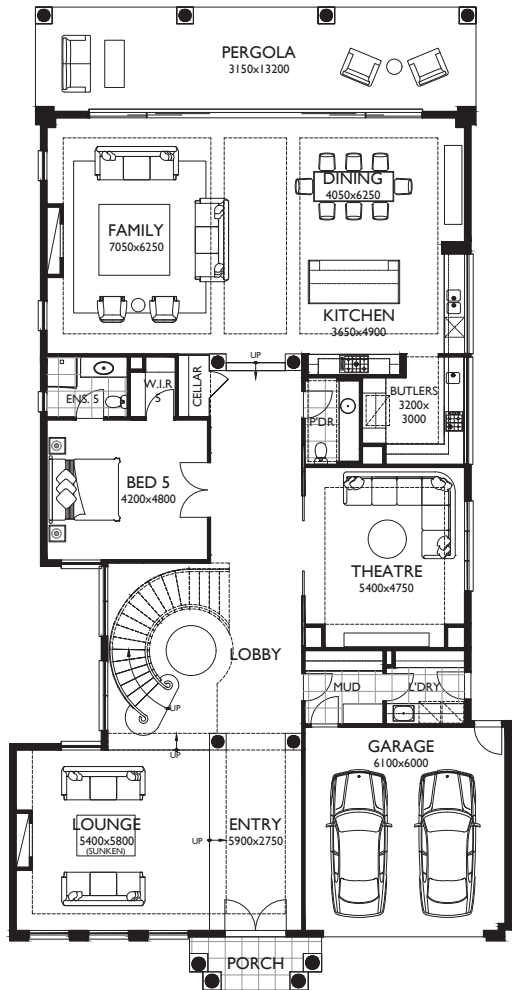


MARQUE | Luxury

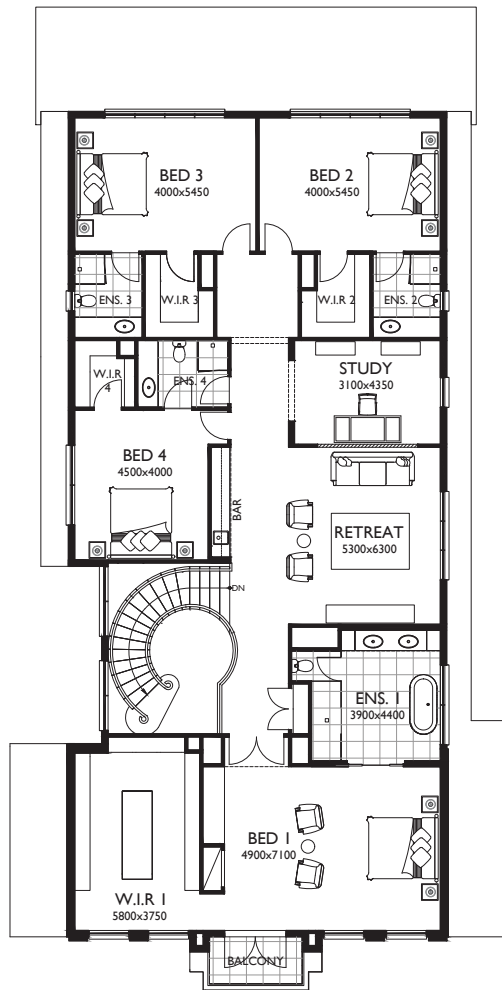


# Buckley 70 as displayed

 5
  5
  4
  1
  2



GROUND FLOOR



FIRST FLOOR

## MEASUREMENTS

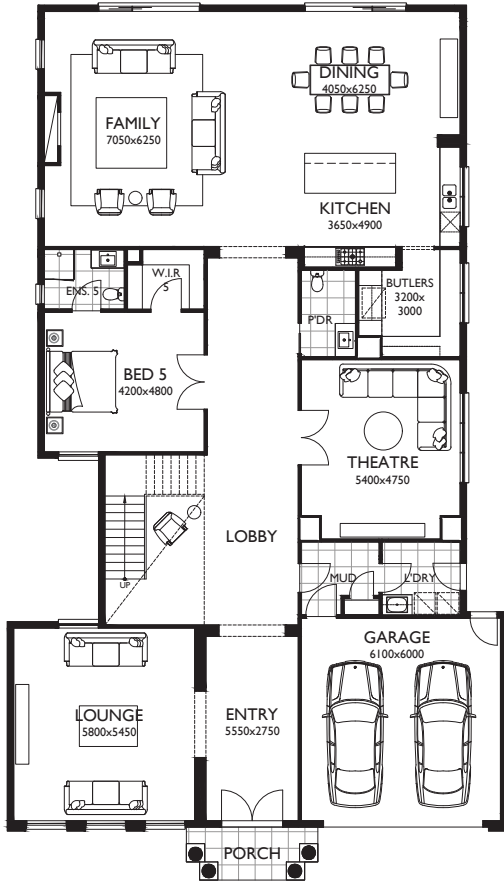
Ground Floor	283.51m <sup>2</sup>	30.52sq
First Floor	275.77m <sup>2</sup>	29.68sq
Total Living	559.28m <sup>2</sup>	60.20sq
Porch	5.89m <sup>2</sup>	0.63sq
Garage	39.16m <sup>2</sup>	4.22sq
Balcony	5.89m <sup>2</sup>	0.63sq
Pergola	41.32m <sup>2</sup>	4.45sq
<b>Total Area</b>	<b>651.54m<sup>2</sup></b>	<b>70.13sq</b>

As displayed facade: Renaissance  
 Speak to our team about available facade options.

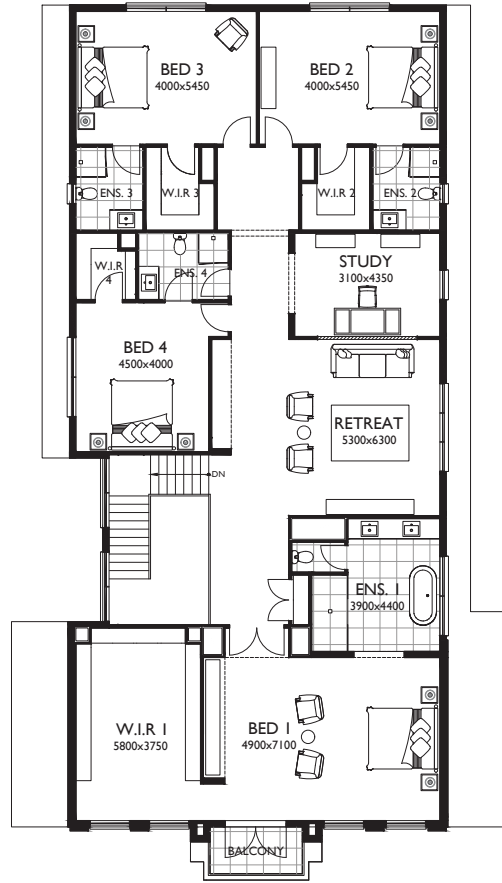


# Buckley 66

 5
  5
  4
  1
  2



GROUND FLOOR



FIRST FLOOR

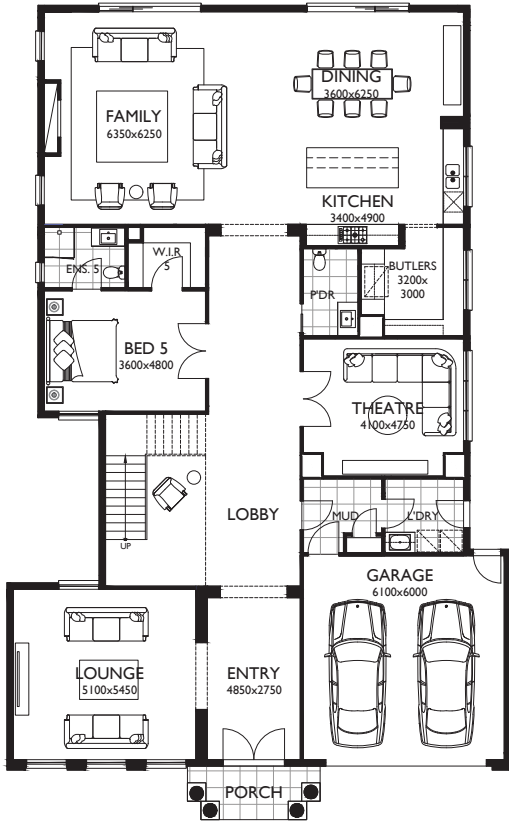
## MEASUREMENTS

Ground Floor	284.58m <sup>2</sup>	30.63sq
First Floor	276.18m <sup>2</sup>	29.73sq
Total Living	560.76m <sup>2</sup>	60.36sq
Porch	5.89m <sup>2</sup>	0.63sq
Garage	39.16m <sup>2</sup>	4.22sq
Balcony	5.89m <sup>2</sup>	0.63sq
<b>Total Area</b>	<b>611.70m<sup>2</sup></b>	<b>65.84sq</b>

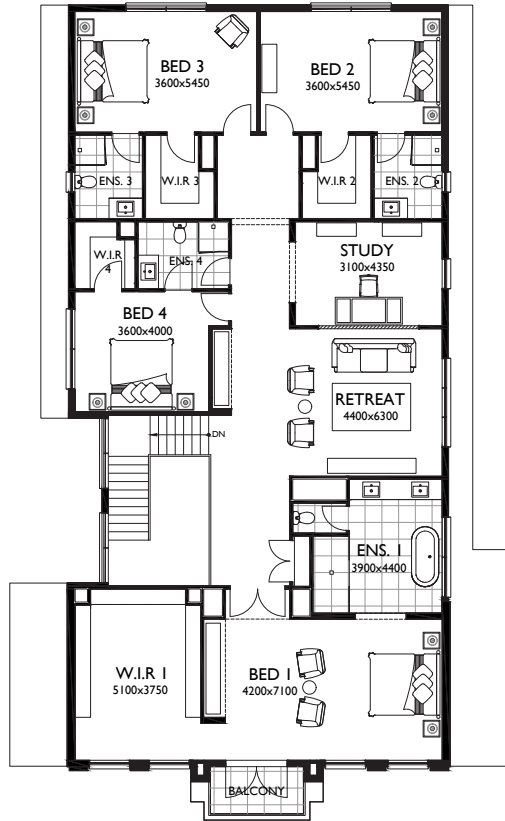


# Buckley 60

 5
  5
  4
  1
  2



GROUND FLOOR



FIRST FLOOR



## MEASUREMENTS

Ground Floor	257.85m <sup>2</sup>	27.76sq
First Floor	254.04m <sup>2</sup>	27.35sq
Total Living	511.89m <sup>2</sup>	55.10sq
Porch	5.89m <sup>2</sup>	0.63sq
Garage	39.16m <sup>2</sup>	4.22sq
Balcony	5.89m <sup>2</sup>	0.63sq
<b>Total Area</b>	<b>562.83m<sup>2</sup></b>	<b>60.58sq</b>





## Buckley

An embodiment of grandeur and sophistication, welcome to Buckley designed by Marque. As you step into the grand lobby, you are greeted by the promise of comfort that unfolds over two majestic levels, each thoughtfully designed to harmonise elegance with functionality. The grand staircase, a striking focal point, adds to the home's allure. The heart of the home is its chef's kitchen, equipped with a large butler's pantry. Adjacent to the kitchen, a wine cellar and theatre room promise endless evenings of entertainment. With three living rooms and five bedrooms, each accompanied by its own ensuite, this home ensures a private retreat for you, your family and guests. Buckley is not just a residence; it is a lifestyle statement, offering an unparalleled living experience that caters to every desire in a dream home.

MARQUE | Luxury





# MARQUE | Luxury

Marque Property Group Pty Ltd  
1104-1108 Toorak Rd, Camberwell VIC 3124  
1300 062 778 [marque.com.au](http://marque.com.au)

All imagery is for illustrative purposes only. Facades are subject to change depending on developers, Council and other authority requirements. Floorplan variations may occur depending on facade selected. Always refer to contract documentation and working drawings for details. Working drawings take precedence over brochure. Marque reserves the right to amend specification and price without notice. All designs are property of Marque and must not be used, reproduced, copied or varied, wholly or in part without written permission from an authorised Marque representative. Marque Property Group. Builder's Licence CDB U 50037. V2 04.09.24.