

# Belmore

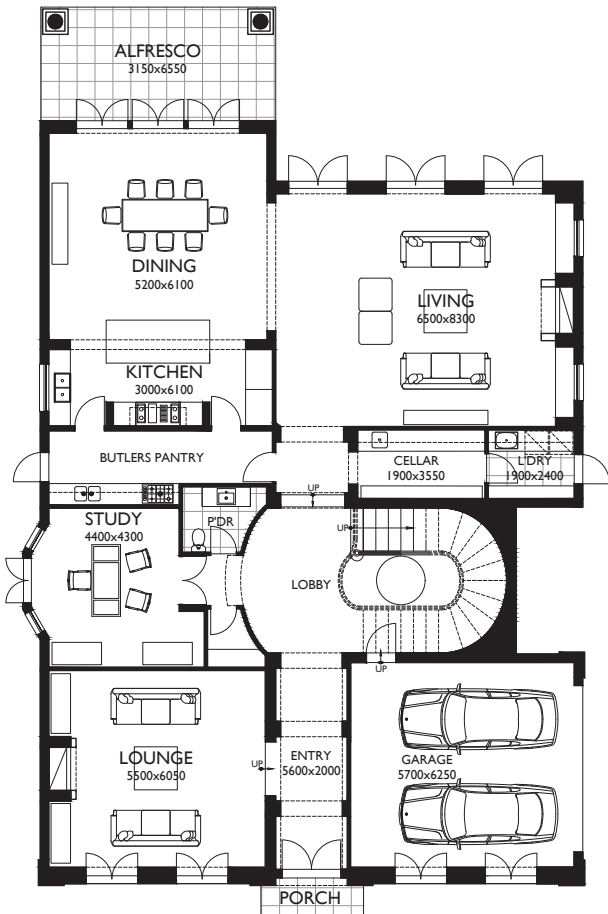
37 Belmore Road, Balwyn North



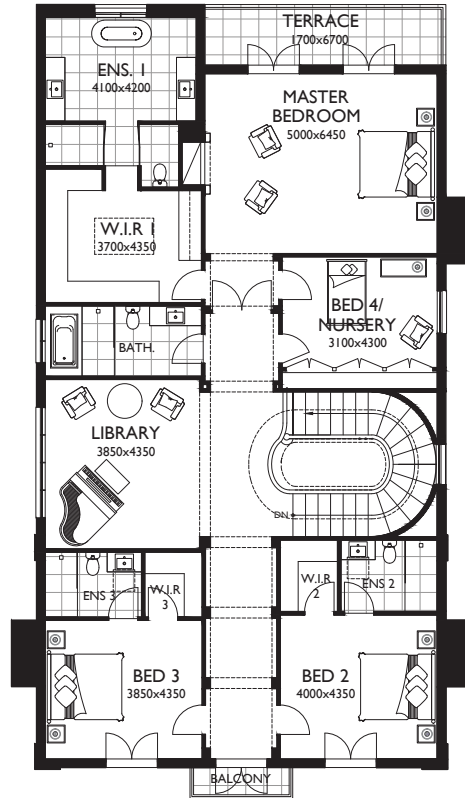
MARQUE | Luxury

# Belmore 62 as displayed

 4
  4.5
  3
  1
  2



GROUND FLOOR



FIRST FLOOR

## MEASUREMENTS

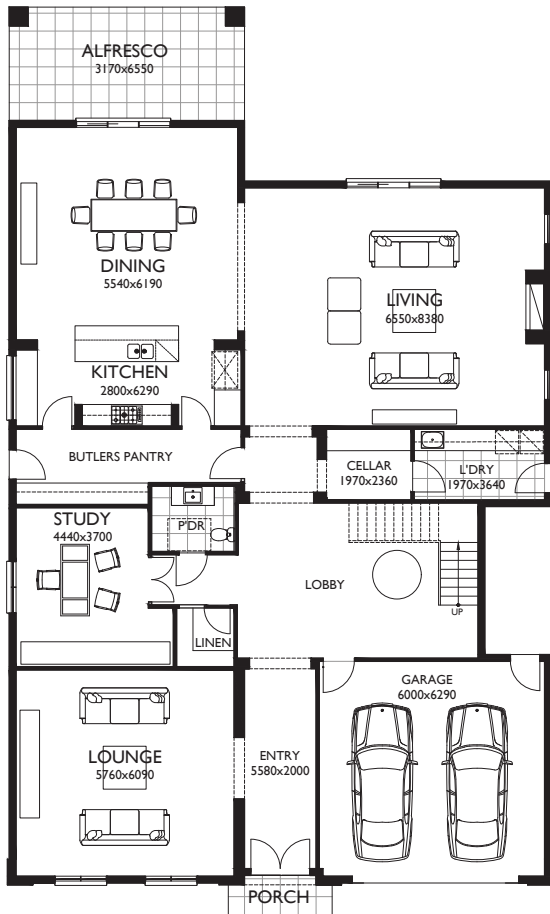
Ground Floor	261.95m <sup>2</sup>	28.20sq
First Floor	235.78m <sup>2</sup>	25.38sq
Total Living	497.73m <sup>2</sup>	53.58sq
Porch	2.74m <sup>2</sup>	0.29sq
Garage	39.41m <sup>2</sup>	4.24sq
Terrace	11.36m <sup>2</sup>	1.22sq
Balcony	2.56m <sup>2</sup>	0.28sq
Alfresco	20.82m <sup>2</sup>	2.24sq
<b>Total Dwelling</b>	<b>574.62m<sup>2</sup></b>	<b>61.85sq</b>

As displayed facade: Chateau  
 Speak to our team about available facade options.

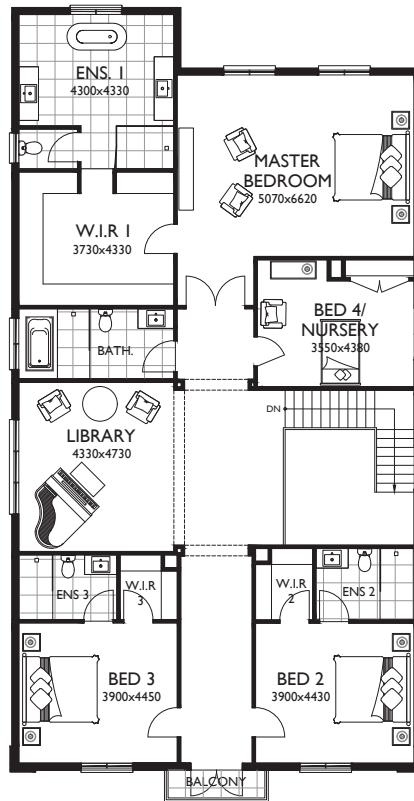


# Belmore 60

 4
  4.5
  3
  1
  2



GROUND FLOOR



FIRST FLOOR

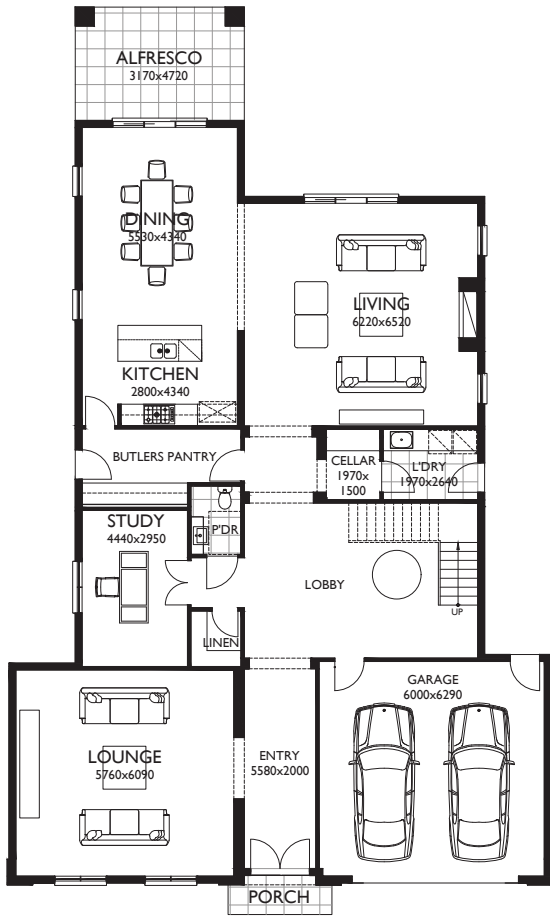
## MEASUREMENTS

Ground Floor	259.25m <sup>2</sup>	27.91sq
First Floor	231.79m <sup>2</sup>	24.95sq
Total Living	491.04m <sup>2</sup>	52.86sq
Porch	3.00m <sup>2</sup>	0.32sq
Garage	40.47m <sup>2</sup>	4.36sq
Balcony	2.55m <sup>2</sup>	0.27sq
Alfresco	20.83m <sup>2</sup>	2.24sq
<b>Total Dwelling</b>	<b>557.89m<sup>2</sup></b>	<b>60.05sq</b>

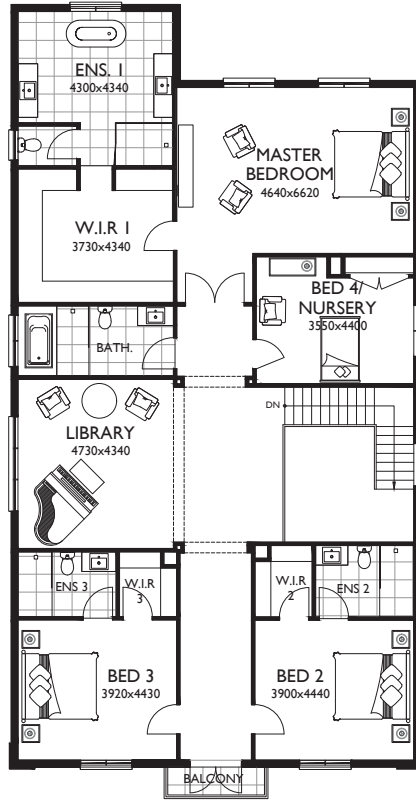


# Belmore 54

 4  
  4.5  
  3  
  1  
  2



GROUND FLOOR



FIRST FLOOR



## MEASUREMENTS

Ground Floor	211.50m <sup>2</sup>	22.77sq
First Floor	229.12m <sup>2</sup>	24.66sq
Total Living	440.62m <sup>2</sup>	47.43sq
Porch	3.00m <sup>2</sup>	0.32sq
Garage	40.47m <sup>2</sup>	4.36sq
Balcony	2.55m <sup>2</sup>	0.27sq
Alfresco	14.96m <sup>2</sup>	1.61sq
<b>Total Dwelling</b>	<b>501.60m<sup>2</sup></b>	<b>53.99sq</b>

MARQUE | Luxury



## Belmore

Experience the warmth and grandeur of European Provincial luxury in the Belmore show home by Marque. Palatial open living spaces sprawl across two floors, surrounding a grand staircase that gently commands attention as you're welcomed into the home. Embracing the heritage of a European lifestyle, an exquisitely appointed designer kitchen nurtures large familial meals and through its sizeable butler's pantry and wine cellar, encourages sophisticated entertaining. The master suite includes the romance of a warm and inviting gas fire, a private balcony, and walk-in closet with its own in-built bench or pamper area, creating a tranquil space to prepare or unwind in after a long day. Steeped in tradition and boasting ornate details within, and on its facade, Belmore is the home for lovers of classic style.

MARQUE | Luxury



# MARQUE | Luxury

**Marque Property Group Pty Ltd**  
1104-1108 Toorak Rd, Camberwell VIC 3124  
1300 062 778 [marque.com.au](http://marque.com.au)

All imagery is for illustrative purposes only. Facades are subject to change depending on developers, council and other authority requirements. Always refer to the contract documentation for details. Working drawings take precedence over brochure. Marque reserves the right to amend specification and price without notice. All designs are property of Marque and must not be used, reproduced, copied or varied, wholly or in part without written permission from an authorised Marque representative.  
Marque Property Group Builder's Licence CDB U 50037. 18.09.24.